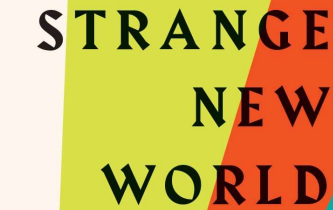


CHAPTER 7

The Sexual Revolution of the LGBTQ+

Major Premise:

In a relatively short time, the LGBTQ+ alliance has accomplished much of its political agenda and significantly altered Western culture. In particular, transgender ideology now exercises such influence on the American legal system that it has become impossible to avoid.



STRANGE NEW WORLD

HOW THINKERS
AND ACTIVISTS
REDEFINED IDENTITY
AND SPARKED THE
SEXUAL REVOLUTION

CARL R.
TRUEMAN

FOREWORD BY
RYAN T. ANDERSON

A Marriage of Convenience

The political alliance of gays, lesbians, bisexuals, and transgenders is a forced contrivance. This “coalition arose out of a shared sense of victimhood” and a perceived common enemy, so-called “heteronormative society” (p. 131).



According to the APA Dictionary of Psychology, “heteronormativity” is

“the assumption that heterosexuality is the standard for defining normal sexual behavior and that male–female differences and gender roles are the natural and immutable essentials in normal human relations.

According to some social theorists, this assumption is fundamentally embedded in, and legitimizes, social and legal institutions that devalue, marginalize, and discriminate against people who deviate from its normative principle (e.g., gay men, lesbians, bisexuals, transgendered persons).”



Trans Ideology

Transgender ideology assumes the authority of inner psychology over biology in *deciding* gender. Transgender proponents argue gender is a “social construct” and separable from sex based on the observation of the way male/female roles vary among different cultures. Such a conceptual move requires a “dramatic metaphysical leap”—a cognitive change in the conceptualization of actual reality—with some extra help from technology & politics (p. 133).



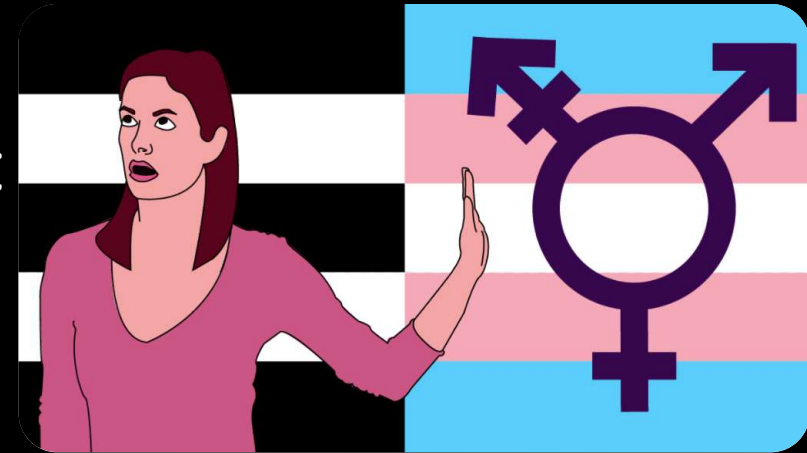
The Problem of the “T”

Transgender ideology’s affirmation of “the separability of biological sex from gender” makes the “addition of the ‘T’ to LGB ... in a very real sense incoherent,” since “lesbians, gay men, and bisexuals all assume the sex binary of male and female as grounded in basic biology” (p. 134)



Trans Ideology and Feminism

Some radical feminists, such as Janice Raymond & Germaine Greer, deny that a man can become a woman just by thinking and acting so, arguing, in effect, that, “biology is still a part of being a woman because it shapes how women experience the world” (p. 137). On the other hand, “trans ideology really rests upon a psychological definition of what it means to be a woman” (p. 138).



Trans Ideology and Feminism

Trueman points out that, “taking seriously the gender binary inevitably places one at odds with the trans movement” and Greer, Raymond, & others, such as J. K. Rowley have been dismissed as TERFs, trans-exclusionary radical feminists. (p. 139).



Trans Ideology and Feminism

According to Trueman, Greer argues that “men who transition to women are simply playing the roles that they, as men, think women should. Anyone who has seen the Vanity Fair cover picture of Caitlyn Jenner feels the force of what Greer is saying here: a scantily clad Jenner poses provocatively in just the way that a man would expect a cover girl to do” (p. 139).



Laverne Cox - Actor who identifies as transgender woman. He has an identical twin, Reginald Lamar Cox, a musician and actor.



SOGI: The Yogyakarta Principles

The *Yogyakarta Principles* are guidelines for the framing of SOGI (sexual orientation and gender identification) laws worldwide. Though the groups who wrote them are not connected to or sanctioned by any government, “many countries ... have adopted the principles” and they will “continue to influence political and legal attitudes” toward the LGBTQ+ movement (p. 140).



SOGI: The Yogyakarta Principles

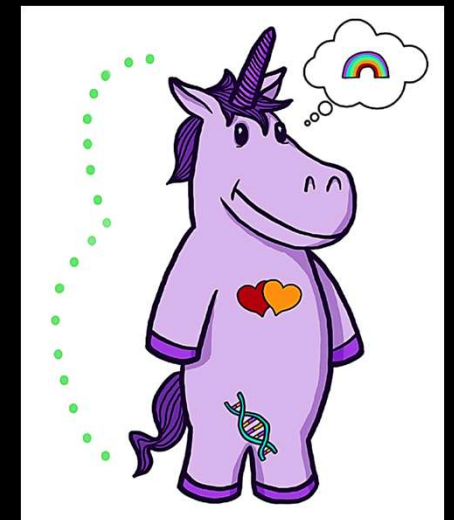
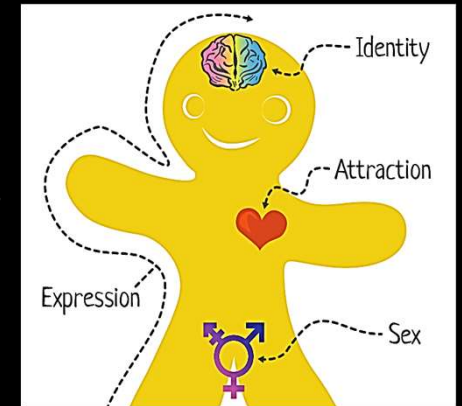
Trueman points out several problems within the *Yogyakarta Principles* (pp. 141-142):

1. The idea of “sexual orientation ... has no content” since “it is simply defined by subjective desire ... sexual attraction to anything—a woman, a frog, or a cardboard box would qualify.”



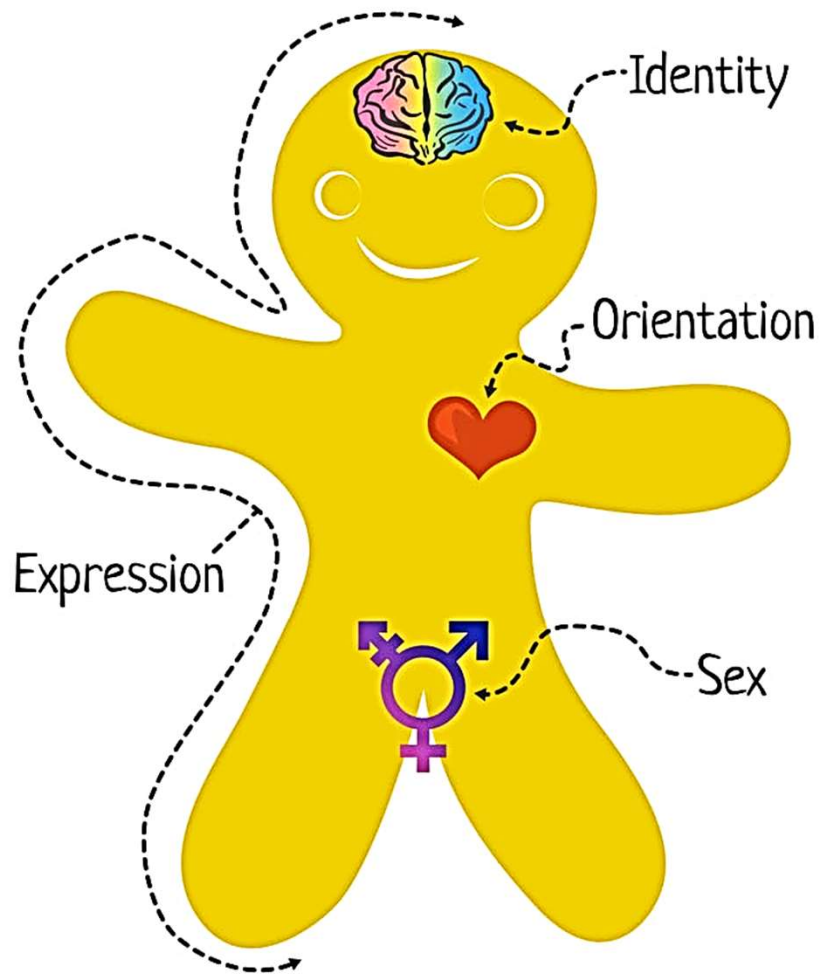
SOGI: The Yogyakarta Principles

2. Sex is separated from gender, and identity is reduced to internal psychology. Any disagreement with someone's expression of their self-identification would be "oppression."
3. Since "sex is 'assigned' at birth and is entirely separable from gender ... any judgment made ... regarding the gender of the child based on physical sex is ... provisional and a potential alien imposition on the child's real identity."



The Genderbread Person

by www.ItsPronouncedMetrosexual.com



Gender Identity

Woman Genderqueer Man

Gender identity is how you, in your head, think about yourself. It's the chemistry that composes you (e.g., hormonal levels) and how you interpret what that means.

Gender Expression

Feminine Androgynous Masculine

Gender expression is how you demonstrate your gender (based on traditional gender roles) through the ways you act, dress, behave, and interact.

Biological Sex

Female Intersex Male

Biological sex refers to the objectively measurable organs, hormones, and chromosomes. Female = vagina, ovaries, XX chromosomes; male = penis, testes, XY chromosomes; intersex = a combination of the two.

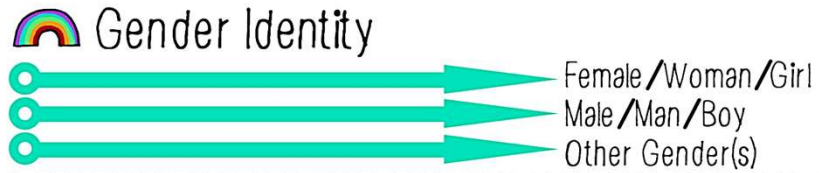
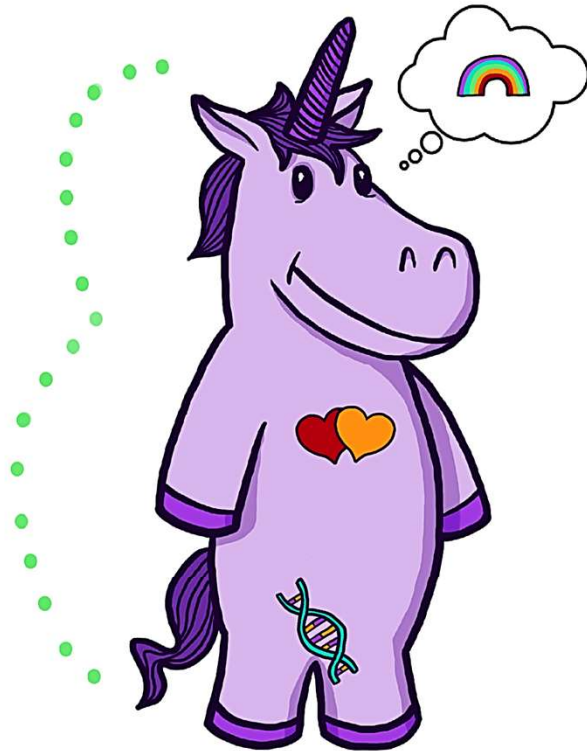
Sexual Orientation

Heterosexual Bisexual Homosexual

Sexual orientation is who you are physically, spiritually, and emotionally attracted to, based on their sex/gender in relation to your own.

The Gender Unicorn

Graphic by:
TSER
Trans Student Educational Resources



THE SOGIE ASTRONAUT **GALAXY OF LIMITLESS POSSIBILITIES!*

*SOGIE STANDS FOR SEXUAL ORIENTATION, GENDER IDENTITY & EXPRESSION



SEX ASSIGNED AT BIRTH

- FEMALE MALE INTERSEX/OTHER

WE ASK BECAUSE WE CARE!



GENDER IDENTITY



WOMAN
MAN
ANOTHER



GENDER EXPRESSION



FEMININE
MASCULINE
ANDROGYNOUS



PRONOUNS

- SHE/HER/HERS HE/HIM/HIS THEY/THEY/THEIRS
 ZE/HIR/HIRS SOMETHING ELSE NO PRONOUNS, USE NAME

CISGENDER: IF YOUR SEX ASSIGNED AT BIRTH ALIGNS WITH YOUR GENDER IDENTITY



TRANSGENDER: IF YOUR GENDER IDENTITY DOES NOT ALIGN WITH YOUR SEX ASSIGNED AT BIRTH



ATTRACTED TO (SEXUALLY/ROMANTICALLY/EMOTIONALLY)



WOMEN/FEMINITY
MEN/MASCULINITY
MULTIPLE GENDERS

Trans Ideology Cannot Be Avoided

Because “so much of traditional society has been shaped by the assumed reality of the gender binary” (p. 144) the advancement of transgender ideology will mean that everything related to the gender binary must change, including public restrooms, school locker rooms, women’s sports, prisons, etc. Furthermore, “trans ideology now has a grip on the law in such a way that it is going to be impossible to avoid” (p. 145).



Discussion Questions

1. How do you think Carl Trueman is doing so far with his analysis? What disagreements might you have?
2. How have these gender laws and cultural changes affected your work or your daily life?
3. Can you envision scenarios in which going along with gender laws and cultural changes could compromise our beliefs? What can we do to ensure we stand firm in our beliefs?
4. What are the implications of trans ideology for biological females in the public sphere? Males?

Discussion Questions

5. In what ways do traditional gender norms create a flourishing society?
6. How will children be affected in their identities, mental health, and perspective on life in a society filled with gender confusion and trans ideology?